



Industrial Reverse Osmosis

RO systems are designed to reject 99.9% of minerals and salts in the water supply. This process is used in the treatment of drinking water, industrial process waters, municipal and industrial wastewater recovery and reuse.



- HIGH REJECTION LOW ENERGY MEMBRANES
- FLOW RATES UP TO 1MGD
- CUSTOMIZED SYSTEMS OVER 1MGD
- SS316L PIPING FOR HIGH PRESSURE
- UPVC SCHEDULE 80 PRE AND POST TREATMENT
- ELECTRICAL RATING 230/380/460V 3PH 50/60HZ
- MADE IN USA

Model NBWS	Flow Rate (GPM)	Production Capacity (GPD)	Production Capacity (m3)	Number of Membranes (8" x 40")	Feed Flow Rate	System Dimensions (L x W x H)	Feed Pump (hp)	RO Pump (hp)
Industrial Reverse Osmosis For TDS > 2500 ppm								
NBWS-BWRO-25-20000	14	20,000	76	4	30	300 x 48 x 60	3.0	7.5
NBWS-BWRO-25-30000	21	30,000	114	6	50	300 x 48 x 60	5.0	10.0
NBWS-BWRO-25-40000	28	40,000	151	8	60	300 x 48 x 60	5.0	10.0
NBWS-BWRO-25-50000	35	50,000	189	10	75	300 x 48 x 60	5.0	15.0
NBWS-BWRO-25-60000	42	60,000	227	12	90	300 x 48 x 60	7.5	15.0
NBWS-BWRO-25-80000	56	80,000	300	18	120	300 x 48 x 60	7.5	20.0
NBWS-BWRO-25-100000	69	100,000	379	20	150	300 x 48 x 60	10.0	25.0
NBWS-BWRO-25-120000	83	120,000	454	20	175	300 x 60 x 60	10.0	30.0
NBWS-BWRO-25-150000	104	150,000	568	24	220	300 x 60 x 60	15.0	40.0
NBWS-BWRO-25-200000	139	200,000	757	36	300	300 x 60 x 60	20.0	45.0
NBWS-BWRO-25-300000	208	300,000	1136	48	430	300 x 60 x 60	25.0	65.0
NBWS-BWRO-25-500000	347	500,000	1893	84	700	300 x 80 x 60	20 x 2	50 x 2
NBWS-BWRO-25-700000	486	700,000	2650	114	1000	300 x 80 x 60	25 x 2	60 x 2
NBWS-BWRO-25-1000000	694	1,000,000	3785	162	1400	300 x 96 x 60	30 x 2	70 x 2

* Specifications based on projections using IMSD. Brackish Well with TDS of 2,500ppm, BWRO Low Pressure High Rejection Nitto membranes. For requirements over 2500 ppm TDS submission of inquiry is required.

Applications

- Drinking Water Treatment
- Food Manufacturing
- Beverage Bottling
- Resorts
- Municipal Water Treatment
- Wastewater Recovery/Reuse
- Desalination Second Pass
- Ultrapure Water for Microelectronics
- Industrial Boilers
- Car Washes

USA
19360 Rinaldi Street
Unit 228
Porter Ranch, CA. 91326
+1 818 435 2925

Guam
Unit 130 1290 N. Marine
Corps. Drive
Dededo, Guam 96929
+671 653 0285

Manila
Unit 310 DHI Bldg. #2 Lapu
Lapu St. Brgy. Magallanes
Makati City
+63 2 8851 6107

website
www.thenaturesblend.com

email
customercare@thenaturesblend.com



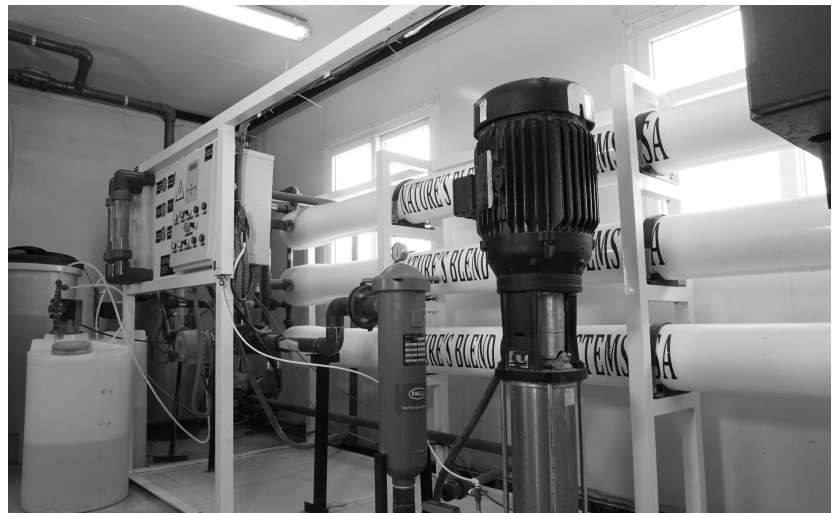
System Specification Sizing

Selecting the correct reverse osmosis is vital to the proper operation and efficiency of the RO system.

Criteria to be considered when choosing the right system:

- Feed Water TDS (total dissolved solids)
 - Municipal water TDS Below 1,000 ppm
 - Lightly Brackish Water TDS Below 2,500 ppm
 - Brackish Water TDS 5,000 to 10,000 ppm
 - Sea Water TDS 10,000 to 40,000 ppm

NBWS-BWRO-50-80000 Reverse Osmosis System



Individual Customer Specifications

Every project and requirement is different. For customized solutions tailored to individual specifications; feel free to contact a customer care representative. Our team of engineers are available to help design a system for a customer's individual requirement.